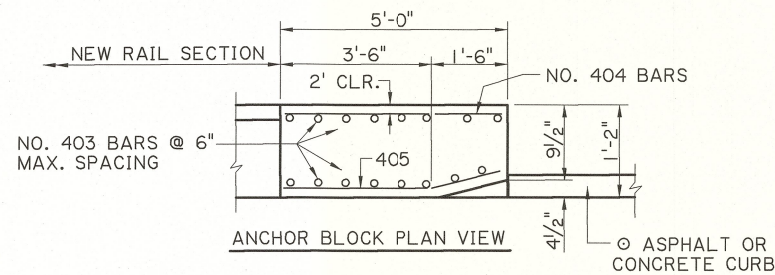
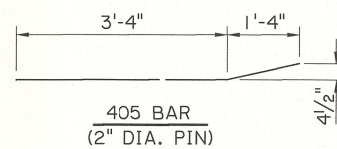
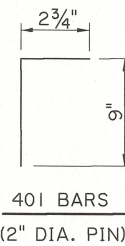
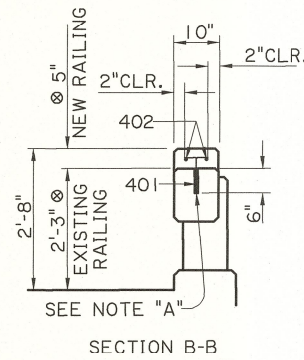
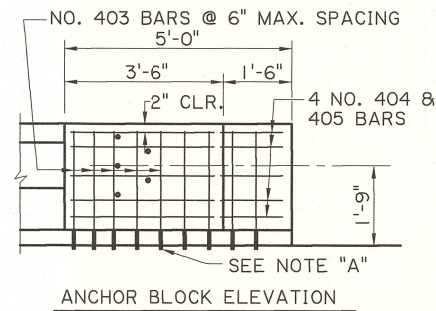
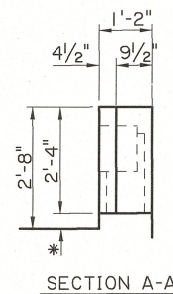
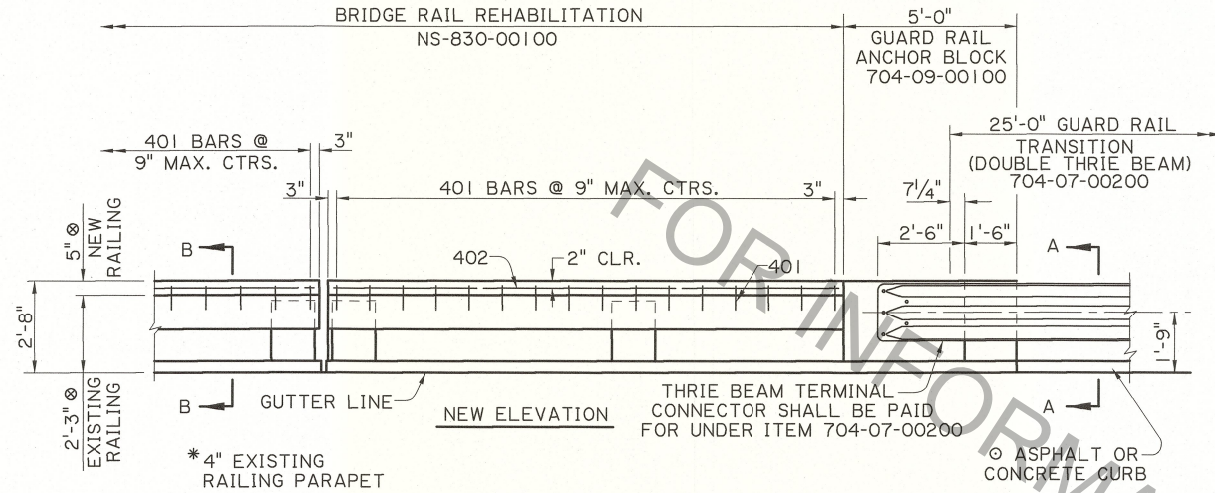


NOTE: HOLES FOR 401 BARS SHALL BE DRILLED ON CL RAIL



GENERAL NOTES

FOR ADDITIONAL INFORMATION ON GUARD RAIL, SEE STANDARD PLANS FOR HIGHWAY GUARD RAIL (MASH).

ALL DIMENSIONS SHALL BE VERIFIED IN THE FIELD BY THE CONTRACTOR AND APPROVED BY THE PROJECT ENGINEER.

○ FOR CURB & TRANSITION INFORMATION, SEE STANDARD PLANS FOR HIGHWAY GUARD RAIL (MASH), SHEET 3 OF 11.

○ 2'-3" & 5" DIMENSIONS MAY VARY.

BARRIER RAIL REHABILITATION

ALL WORK AND MATERIALS REQUIRED TO RAISE THE EXISTING BARRIER RAIL TO THE REQUIRED HEIGHT OF 2'-8" SHALL BE PAID FOR UNDER: BARRIER RAIL REHABILITATION, PER LIN. FT.

GUARD RAIL ANCHOR BLOCKS

ALL WORK AND MATERIALS REQUIRED TO REMOVE EXISTING RAILING AND CONSTRUCT THE ANCHOR BLOCK SHALL BE PAID FOR UNDER: GUARD RAIL ANCHOR BLOCK, PER EACH, ITEM 704-09-00100

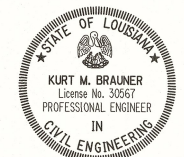
CONCRETE IN CROSS HATCHED AREA SHALL BE REMOVED. THE EXISTING REINFORCING STEEL SHALL REMAIN IN PLACE AND SHALL BE CLEANED AND STRAIGHTENED TO THE SATISFACTION OF THE PROJECT ENGINEER BEFORE POURING NEW CONCRETE.

CONCRETE

NEW CONCRETE SHALL BE CLASS "A1".

NOTE "A"

NO. 401 & 403 BARS SET IN 3/4" Ø DRILLED HOLES. CLEAN HOLES WITH COMPRESSED AIR AND MAKE THEM FREE OF ANY OIL OR RESIDUE. FILL HOLES WITH TYPE V, GRADE 2 OR 3 EPOXY LISTED ON APPROVED MATERIALS LIST, PRODUCT CATEGORY "EPOXY RESIN SYSTEMS FOR CONCRETE." PLACE BARS IN HOLES AND WAIT THE MANUFACTURERS CURE TIME BEFORE POURING NEW CONCRETE.

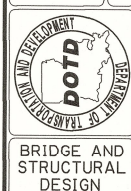


9/28/17

| | |
|--------------------------------------|------------|
| SHEET NUMBER | |
| DESIGNED | P. FOSSIER |
| CHECKED | C. GAUDRY |
| DETAILER | J. DOUCET |
| CHECKED | P. FOSSIER |
| REVIEWER | K. BRAUNER |
| SERIES # | |
| NO. | |
| DATE | |
| REVISION OR CHANGE ORDER DESCRIPTION | |
| BY | |
| PARISH | |
| CONTROL SECTION | |
| STATE | |
| PROJECT | |

ANCHOR BLOCK & BRIDGE RAIL REHABILITATION FOR LOW CONCRETE POST & RAIL FOR USE WITH HIGHWAY GUARD RAIL (MASH)

BD.2.6.5.2.03



BRIDGE AND STRUCTURAL DESIGN